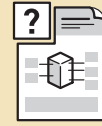
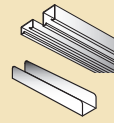


Distribution trunking systems

Salamandre®
distribution
trunking



P. 116
Introduction



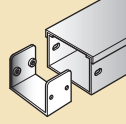
P. 125
Lighting
trunking



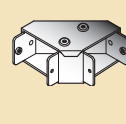
P. 118
Selection
charts



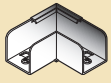
P. 120
Order
information



P. 121
Standard
trunking



P. 122
Standard
trunking
fittings



P. 125
Lighting
trunking fittings



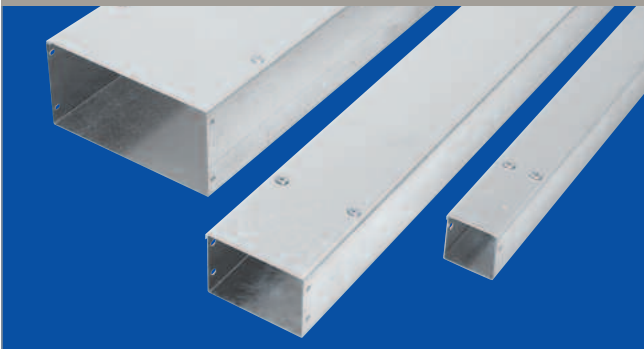
P. 127
Technical
data

Metal trunking systems... distribution and lighting

Available in multiple configurations and finishes, Salamandre metal trunking systems are an established favourite in Legrand's market leading cable management portfolio.

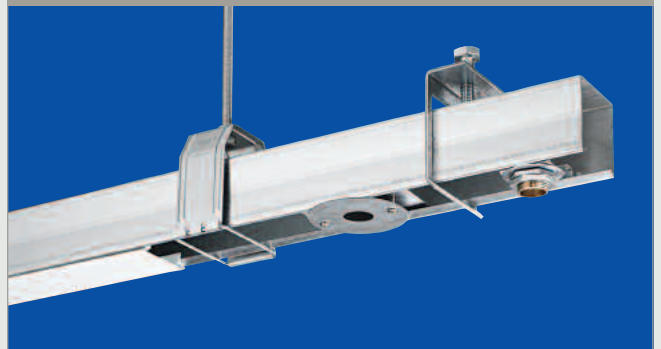


DISTRIBUTION TRUNKING



Available in single and multi-compartment options, Salamandre distribution trunking has a variety of fixing methods for fast, safe installation... screws, tamperproof screws and 90° turnbuckles

LIGHTING TRUNKING



High quality galvanised steel and painted steel lighting trunking available in a diverse selection of sizes... all of which can be installed quickly and with the minimum amount of hassle

SELECTION OF LID FIXINGS

Standard distribution trunking is available with a selection of lid fixings - screwfix, tamperproof and diecast turnbuckle



Screwfix



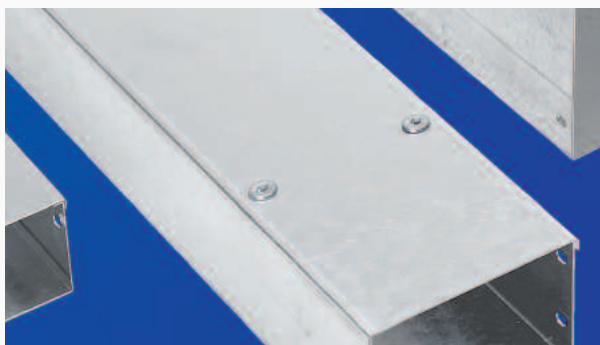
Tamperproof



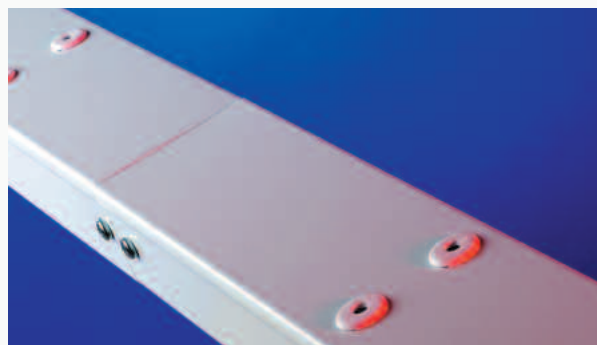
Diecast turnbuckle

SELECTION OF FINISHES

In addition to standard galvanised trunking, the Salamandre range is available with a powder coated white RAL 9003 finish



Standard galvanised trunking



Powder coated white RAL 9003 trunking offers low smoke and fume emissions

Salamandre® distribution trunking

standard and lighting trunking

STANDARD

TRUNKING		FITTINGS										
Size (mm)	Lengths, lids and couplers	Top lid 90° bends – gussett	Top lid 90° bends – square	Inside lid 90° bends – gussett	Inside lid 90° bends – square	Outside lid 90° bends – gussett	Outside lid 90° bends – square	Top lid 45° bends	Inside lid 45° bends	Outside lid 45° bends	Top lid tees – gusset	Top lid tees – square
50 x 50	MG22	MG22AGL	MG22ASL	MG22BGL	MG22BSL	MG22CGL	MG22CSL	MG22AL	MG22BL	MG22CL	MG22AGT	MG22AST
75 x 50	MG32	MG32AGL	MG32ASL	MG32BGL	MG32BSL	MG32CGL	MG32CSL	MG32AL	MG32BL	MG32CL	MG32AGT	MG32AST
75 x 75	MG33	MG33AGL	MG33ASL	MG33BGL	MG33BSL	MG33CGL	MG33CSL	MG33AL	MG33BL	MG33CL	MG33AGT	MG33AST
100 x 50	MG42	MG42AGL	MG42ASL	MG42BGL	MG42BSL	MG42CGL	MG42CSL	MG42AL	MG42BL	MG42CL	MG42AGT	MG42AST
100 x 75	MG43	MG43AGL	MG43ASL	MG43BGL	MG43BSL	MG43CGL	MG43CSL	MG43AL	MG43BL	MG43CL	MG43AGT	MG43AST
100 x 100	MG44	MG44AGL	MG44ASL	MG44BGL	MG44BSL	MG44CGL	MG44CSL	MG44AL	MG44BL	MG44CL	MG44AGT	MG44AST
150 x 50	MG62	MG62AGL	MG62ASL	MG62BGL	MG62BSL	MG62CGL	MG62CSL	MG62AL	MG62BL	MG62CL	MG62AGT	MG62AST
150 x 75	MG63	MG63AGL	MG63ASL	MG63BGL	MG63BSL	MG63CGL	MG63CSL	MG63AL	MG63BL	MG63CL	MG63AGT	MG63AST
150 x 100	MG64	MG64AGL	MG64ASL	MG64BGL	MG64BSL	MG64CGL	MG64CSL	MG64AL	MG64BL	MG64CL	MG64AGT	MG64AST
150 x 150	MG66	MG66AGL	MG66ASL	MG66BGL	MG66BSL	MG66CGL	MG66CSL	MG66AL	MG66BL	MG66CL	MG66AGT	MG66AST
225 x 75	MG93	MG93AGL	MG93ASL	MG93BGL	MG93BSL	MG93CGL	MG93CSL	MG93AL	MG93BL	MG93CL	MG93AGT	MG93AST
225 x 100	MG94	MG94AGL	MG94ASL	MG94BGL	MG94BSL	MG94CGL	MG94CSL	MG94AL	MG94BL	MG94CL	MG94AGT	MG94AST
225 x 150	MG96	MG96AGL	MG96ASL	MG96BGL	MG96BSL	MG96CGL	MG96CSL	MG96AL	MG96BL	MG96CL	MG96AGT	MG96AST
225 x 225	MG99	MG99AGL	MG99ASL	MG99BGL	MG99BSL	MG99CGL	MG99CSL	MG99AL	MG99BL	MG99CL	MG99AGT	MG99AST
300 x 100	MG124	MG124AGL	MG124ASL	MG124BGL	MG124BSL	MG124CGL	MG124CSL	MG124AL	MG124BL	MG124CL	MG124AGT	MG124AST
300 x 150	MG126	MG126AGL	MG126ASL	MG126BGL	MG126BSL	MG126CGL	MG126CSL	MG126AL	MG126BL	MG126CL	MG126AGT	MG126AST
300 x 300	MG1212	MG1212AGL	MG1212ASL	MG1212BGL	MG1212BSL	MG1212CGL	MG1212CSL	MG1212AL	MG1212BL	MG1212CL	MG1212AGT	MG1212AST

LIGHTING TRUNKING

TRUNKING		FITTINGS								
Size (mm)	Lengths	Galvanised lid	White plastic standard lid	Top lid 90° bend	Inside lid 90° bend	Outside lid 90° bend	Top lid 45° bend	Inside lid 45° bend	Outside lid 45° bends	Top lid tee
50 x 50	LT2	LT2GC	LT2PC	LT2ASL	LT2BSL	LT2CSL	LT2AL	LT2BL	LT2CL	LT2AST
50 x 50	WLT2	-	LT2PC	WLT2ASL	WLT2BSL	WLT2CSL	WLT2AL	WLT2BL	WLT2CL	WLT2AST

STANDARD													
FITTINGS					ACCESSORIES AND ANCILLARIES								
Inside lid tees – gusset	Outside lid tees – gusset	Offset tees ⁽¹⁾	Cross-overs	Offset cross-overs ⁽¹⁾	Reducers ⁽²⁾	Bell-mouths	Change faces – left hand	Change faces – right hand	Pin racks	Stop ends	Flanges	Fitting to fitting adaptors	Trunking connectors
					–								
MG22BGT	MG22CGT	MG22OST2C	MG22AGX	MG22OSX2C	–	MG22B	MS22CLH	MS22CRH	MG22PR	MG22E	MG22F	MS22FA	MG22C
					MG32 Z R								
MG32BGT	MG32CGT	MG32OST2C	MG32AGX	MG32OSX2C	MG32 Z R	MG32B	MS32CLH	MS32CRH	MG32PR	MG32E	MG32F	MS32FA	MG32C
					MG33 Z R								
MG33BGT	MG33CGT	MG33OST2C	MG33AGX	MG33OSX2C	MG33 Z R	MG33B	MS33CLH	MS33CRH	MG33PR	MG33E	MG33F	MS33FA	MG33C
					MG42 Z R								
MG42BGT	MG42CGT	MG42OST2C	MG42AGX	MG42OSX2C	MG42 Z R	MG42B	MS42CLH	MS42CRH	MG42PR	MG42E	MG42F	MS42FA	MG42C
					MG43 Z R								
MG43BGT	MG43CGT	MG43OST2C	MG43AGX	MG43OSX2C	MG43 Z R	MG43B	MS43CLH	MS43CRH	MG43PR	MG43E	MG43F	MS43FA	MG43C
					MG44 Z R								
MG44BGT	MG44CGT	MG44OST2C	MG44AGX	MG44OSX2C	MG44 Z R	MG44B	MS44CLH	MS44CRH	MG44PR	MG44E	MG44F	MS44FA	MG44C
					MG62 Z R								
MG62BGT	MG62CGT	MG62OST2C	MG62AGX	MG62OSX2C	MG62 Z R	MG62B	MS62CLH	MS62CRH	MG62PR	MG62E	MG62F	MS62FA	MG62C
					MG63 Z R								
MG63BGT	MG63CGT	MG63OST2C	MG63AGX	MG63OSX2C	MG63 Z R	MG63B	MS63CLH	MS63CRH	MG63PR	MG63E	MG63F	MS63FA	MG63C
					MG64 Z R								
MG64BGT	MG64CGT	MG64OST2C	MG64AGX	MG64OSX2C	MG64 Z R	MG64B	MS64CLH	MS64CRH	MG64PR	MG64E	MG64F	MS64FA	MG64C
					MG66 Z R								
MG66BGT	MG66CGT	MG66OST2C	MG66AGX	MG66OSX2C	MG66 Z R	MG66B	MS66CLH	MS66CRH	MG66PR	MG66E	MG66F	MS66FA	MG66C
					MG93 Z R							–	
MG93BGT	MG93CGT	MG93OST2C	MG93AGX	MG93OSX2C	MG93 Z R	MG93B	MS93CLH	MS93CRH	MG93PR	MG93E	MG93F	–	MG93C
					MG94 Z R							–	
MG94BGT	MG94CGT	MG94OST2C	MG94AGX	MG94OSX2C	MG94 Z R	MG94B	MS94CLH	MS94CRH	MG94PR	MG94E	MG94F	–	MG94C
					MG96 Z R							–	
MG96BGT	MG96CGT	MG96OST2C	MG96AGX	MG96OSX2C	MG96 Z R	MG96B	MS96CLH	MS96CRH	MG96PR	MG96E	MG96F	–	MG96C
					MG99 Z R							–	
MG99BGT	MG99CGT	MG99OST2C	MG99AGX	MG99OSX2C	MG99 Z R	MG99B	MS99CLH	MS99CRH	MG99PR	MG99E	MG99F	–	MG99C
					MG124 Z R							–	
MG124BGT	MG124CGT	MG124OST2C	MG124AGX	MG124OSX2C	MG124 Z R	MG124B	MS124CLH	MS124CRH	MG124PR	MG124E	MG124F	–	MG124C
					MG126 Z R							–	
MG126BGT	MG126CGT	MG126OST2C	MG126AGX	MG126OSX2C	MG126 Z R	MG126B	MS126CLH	MS126CRH	MG126PR	MG126E	MG126F	–	MG126C
					MG1212 Z R							–	
MG1212BGT	MG1212CGT	MG1212OST2C	MG1212AGX	MG1212OSX2C	MG1212 Z R	MG1212B	MS1212CLH	MS1212CRH	MG1212PR	MG1212E	MG1212F	–	MG1212C

(1) Not available in single compartment. Cat. Nos. shown are for 2 compartment option. For 3 compartment option, replace 2C with 3C

(2) Replace Z with reduced trunking size code required (see p. 120)

LIGHTING TRUNKING											
FITTINGS				ACCESSORIES AND ANCILLARIES							
Inside lid tee	Outside lid tee	Crossover	End cap	Flange	Girder clamp	Stirrup hanger	Suspension unit	Pull switch adaptor	Cable retainer	Klik adaptor	Long coupler
LT2BST	LT2CST	LT2ASX	LT2E	LT2F	LT2GCL	LT2H	LT2FS	LT2PSA	LT2CR	LT2KL	LT2C
WLT2BST	WLT2CST	WLT2ASX	WLT2E	WLT2F	WLT2GCL	WLT2H	LT2FS	LT2PSA	LT2CR	LT2KL	LT2C

Salamandre® distribution trunking

order information – standard and lighting

Trunking size codes

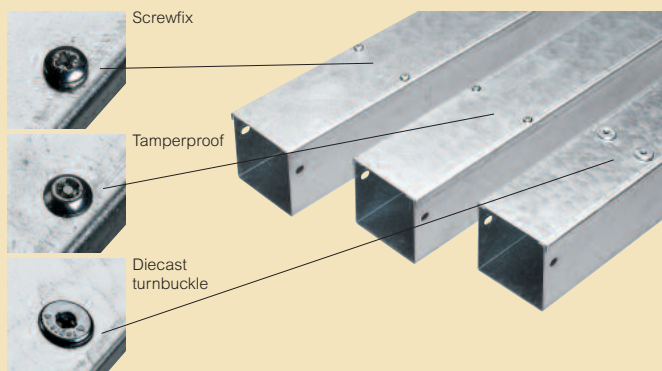
Size (mm) width x depth	Standard trunking
50 x 50	22
75 x 50	32
75 x 75	33
100 x 50	42
100 x 75	43
100 x 100	44
150 x 50	62
150 x 75	63
150 x 100	64
150 x 150	66
225 x 75	93
225 x 100	94
225 x 150	96
225 x 225	99
300 x 100	124
300 x 150	126
300 x 300	1212

In the catalogue, numbers shown on p. 121–124 replace **Z** with the relevant standard trunking size code

Lid fixings

Standard trunking is available with a selection of lid fixings. The chart below shows the relevant prefix for each type. Lighting trunking lids are purchased separately and simply clip into place.

Lid fixing	Standard
Diecast turnbuckle	MG
Screwfix (M5 x 6 mm)	MS
Tamperproof screwfix (M5 x 12 TORX)	MST



Finishes

Finishes	Standard	Lighting
Pre-galvanised steel BS EN 10327 grade DX51D	● eg : MG33	● eg : LT2610
Powder coated	● ⁽¹⁾ eg : MG33P	● ⁽²⁾ eg : WLT2510

(1) Standard trunking is generally powder coated BS 4800 00A05. However the colour should always be specified at time of order

(2) Lighting trunking is supplied as standard in a white RAL 9003 epoxy powder coated finish. Other colours available on request, contact us on 0845 605 4333

Compartment options

Standard trunking is available in multi-compartment options. Trunking and fittings are supplied with equal compartments as standard. For unequal compartments, details must be supplied at the time of order. 3 compartment is available in width code 3 and above.

Standard straight lengths

For 1 compartment trunking there is no need to change the Cat. Nos. Example : MG33
For 2 compartment trunking, add **2C** to the end of the Cat. No. Example : MG33**2C**
For 3 compartment trunking, add **3C** to the end of the Cat. No. Example : MG63**2C**

Standard fittings

For 1 compartment trunking there is no need to change the Cat. No. Example : MG33AGL
For 2 compartment trunking, add **2C** to the end of the Cat. No. Example : MG33AGL**2C**
For 3 compartment trunking, add **3C** to the end of the Cat. No. Example : MG63AGL**3C**

Lighting trunking

Lighting trunking lids and couplers are ordered separately

Distribution trunking classification

Legrand's steel distribution trunking was previously made to BS 4678 Part 1. This is now an obsolescent standard and has been replaced by the latest BS European standard BS EN 50085-2-1

Classification to BS EN 50085-1 2005 and BS EN 50085-2-1 2006

Clause 6.2 According to resistance to impact for installation and application : impact 2-0J

Clause 6.3 According to temperatures given in tables 1, 2 and 3 :

	Min	Max
1. Storage and transport	- 25	-
2. Installation	- 15	-
3. Application	-	+ 60

Clause 6.4 According to resistance to flame propagation : non-flame propagating (MG unpainted)

Clause 6.5 According to electrical continuity characteristic : CTS with electrical continuity (maximum linear impedance 1.0 milliohms per metre)

Clause 6.6 According to electrical insulating characteristic : CTS without electrical insulating characteristic

Clause 6.7 According to degree of protection provided by enclosure according to BS EN 60529 : 1991 : IP 30

Clause 6.9 According to system access cover retention : CTS access cover which can only be opened with a tool

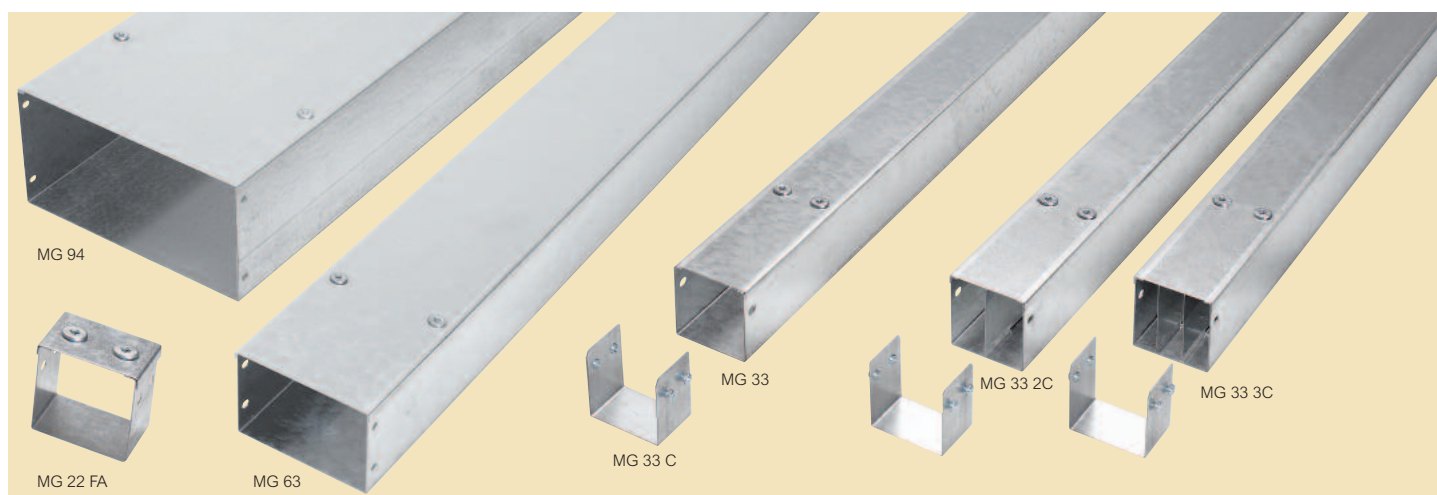
Clause 6.10 According to electrically protective separation : CTS without internal protective partition

Clause 6.101 According to position when surface mounted :
CTS surface mounted on wall
CTS surface mounted on ceiling
(CTS mounted away from the wall or ceiling using fixing devices)
Declare MG cover mounted upwards 2.0 metre hanger centres)

Clause 6.103 According to the functions provided :
Type 2 CTS (distribution)

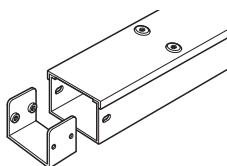
Salamandre® distribution trunking

standard trunking

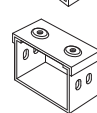
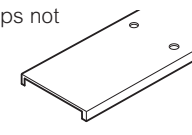
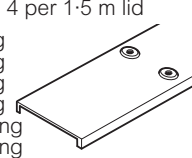


Selection chart (p. 118–119)
Dimensions and technical information (p. 128)

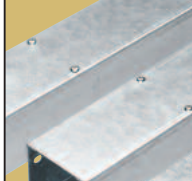
Pack	Cat. Nos.	Trunking lengths – 3 m
		A return edge steel surface trunking system with strength and rigidity Manufactured to BS EN 50085-2-1 Each trunking length is supplied with connector, lid and lid fixings Supplied as standard with diecast turnbuckle fixings. For screwfix or tamperproof screwfix, replace MG with MS or MST. For more details (see order information p. 120)
		Single compartment Also available in multi-compartment options (see p. 120) All dimensions (mm)
1	MG22	50 x 50
1	MG32	75 x 50
1	MG33	75 x 75
1	MG42	100 x 50
1	MG43	100 x 75
1	MG44	100 x 100
1	MG62	150 x 50
1	MG63	150 x 75
1	MG64	150 x 100
1	MG66	150 x 150
1	MG93	225 x 75
1	MG94	225 x 100
1	MG96	225 x 150
1	MG99	225 x 225
1	MG124	300 x 100
1	MG126	300 x 150
1	MG1212	300 x 300



Pack	Cat. Nos.	Spare lids
		Spare turnbuckle lids Diecast turnbuckles included Lids 50 to 150 wide : 6 per 3 m lid Lids 225 and 300 wide : 4 per 1.5 m lid
1	MG2LID	50 mm wide x 3 m long
1	MG3LID	75 mm wide x 3 m long
1	MG4LID	100 mm wide x 3 m long
1	MG6LID	150 mm wide x 3 m long
1	MG9LID	225 mm wide x 1.5 m long
1	MG12LID	300 mm wide x 1.5 m long
		Spare screwfix and tamperproof screwfix lids Screws and retaining clips not included (see below) Lids up to 150 wide : 6 per 3 m lid Lids 225 and 300 wide : 4 per 1.5 m lid Replace MG with MS (screwfix) or MST (tamperproof screwfix) in the Cat. Nos. above
		Accessories
		Trunking connectors Only available in pre-galvanised finish
1	MG Z C	Supplied with connector screws
		Fitting to fitting adaptors Available up to 150 mm x 150 mm Supplied with lid and lid fixings
1	MG Z FA	
		Fastenings
100	ETCLIP	Retaining clip
10	DTB1	Diecast turnbuckle for lid width up to 150 mm
	DTB2	Diecast turnbuckle for lid width 225 mm and above
100	T201	Screwfix (M5) M5 x 6
100	T204	Tamperproof screwfix (M5 TORX) M5 x 8
1	TX25	Screwdriver for tamperproof screwfix



Key : Z = trunking size code
Replace Z with the relevant code (see p. 120)



MG can be replaced by MS or MST for screwfix lids or tamperproof screwfix lids
Also available in multi-compartment options

see p. 120

Salamandre® distribution trunking

standard trunking (continued)



Selection chart (p. 118–119)
Dimensions and technical information (p. 129–130)

Pack	Cat. Nos.	Fittings	Pack	Cat. Nos.	Fittings (continued)
		90° bends All 90° bends are supplied with lid, lid fixings and bend to trunking fastenings			45° bends All 45° bends are supplied with lid, lid fixings and bend to trunking fastenings
		Top lid 90° bends – gusset			Top lid 45° bends
1	MG Z AGL	1 compartment	1	MG Z AL	1 compartment
1	MG Z AGL2C	2 compartment	1	MG Z AL2C	2 compartment
1	MG Z AGL3C	3 compartment	1	MG Z AL3C	3 compartment
		Top lid 90° bends – square			Inside lid 45° bends
1	MG Z ASL	1 compartment	1	MG Z BL	1 compartment
1	MG Z ASL2C	2 compartment	1	MG Z BL2C	2 compartment
1	MG Z ASL3C	3 compartment	1	MG Z BL3C	3 compartment
		Inside lid 90° bends – gusset			Outside lid 45° bends
1	MG Z BGL	1 compartment	1	MG Z CL	1 compartment
1	MG Z BGL2C	2 compartment	1	MG Z CL2C	2 compartment
1	MG Z BGL3C	3 compartment	1	MG Z CL3C	3 compartment
		Inside lid 90° bends – square			
1	MG Z BSL	1 compartment			
1	MG Z BSL2C	2 compartment			
1	MG Z BSL3C	3 compartment			
		Outside lid 90° bends – gusset			
1	MG Z CGL	1 compartment			
1	MG Z CGL2C	2 compartment			
1	MG Z CGL3C	3 compartment			
		Outside lid 90° bends – square			
1	MG Z CSL	1 compartment			
1	MG Z CSL2C	2 compartment			
1	MG Z CSL3C	3 compartment			

Note : 3 compartment trunking is available in size codes 32 (75 mm) and above

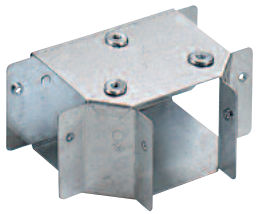
Key : Z = trunking size code
Replace Z with the relevant code (see p. 120)

MG can be replaced by MS or MST for screwfix lids or tamperproof screwfix lids
Also available in multi-compartment options

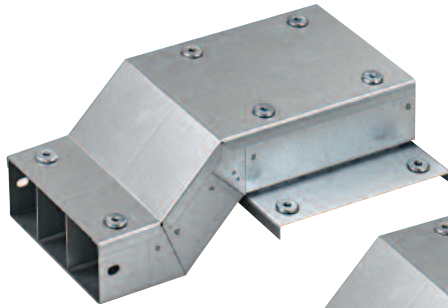
(see p. 120)

Salamandre® distribution trunking

standard trunking (continued)



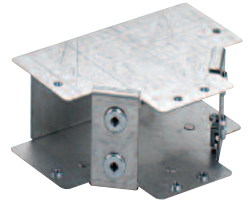
MG 33 AGT



MG 62 OST 3C



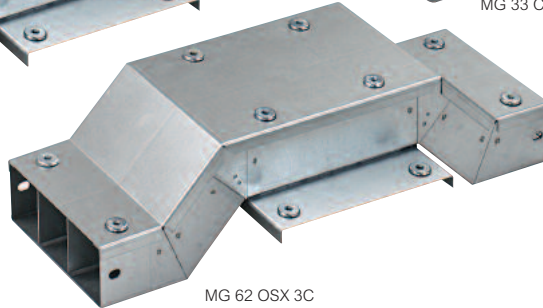
MG 33 CGT



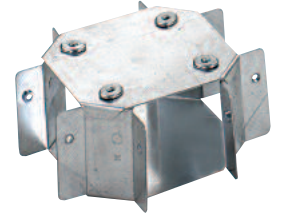
MG 33 BGT



MG 33 AST

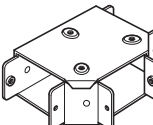
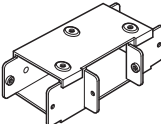
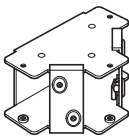
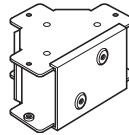
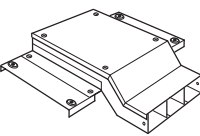


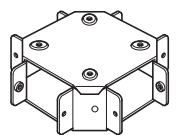
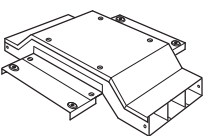
MG 62 OSX 3C




MG 33 AGL

Selection chart (p. 118–119)
Dimensions and technical information (p. 129–130)

Pack	Cat. Nos.	Fittings (continued)
		<p>Tees</p> <p>All top lid, inside lid and outside lid tees are supplied with lid, lid fixings and tee to trunking fastenings Offset tees are supplied with lids and lid fixings only All 2 and 3 compartment tees include a bridge flyover complete with fixing brackets and screws Bridge flyovers reduce the cable capacity by 50% except on offset products which give full cable capacity Inside and outside lid tees – square, available by special order Contact 0845 605 4333</p>
1 1 1	MG Z AGT MG Z AGT2C MG Z AGT3C	<p>Top lid tees – gusset</p> <p>1 compartment 2 compartment 3 compartment</p> 
1 1 1	MG Z AST MG Z AST2C MG Z AST3C	<p>Top lid tees – square</p> <p>1 compartment 2 compartment 3 compartment</p> 
1 1 1	MG Z BGT MG Z BGT2C MG Z BGT3C	<p>Inside lid tees – gusset</p> <p>1 compartment 2 compartment 3 compartment</p> 
1 1 1	MG Z CGT MG Z CGT2C MG Z CGT3C	<p>Outside lid tees – gusset</p> <p>1 compartment 2 compartment 3 compartment</p> 
1 1	MG Z OST2C MG Z OST3C	<p>Offset tees</p> <p>1 compartment not available Connectors not supplied (see p. 121)</p> <p>2 compartment 3 compartment</p> 

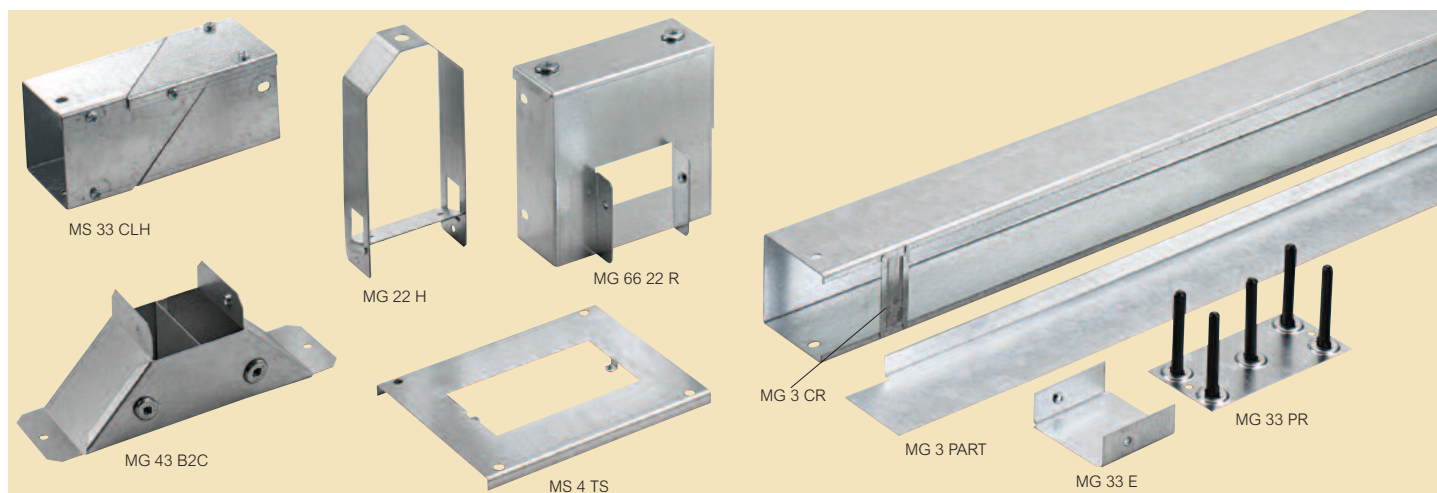
Pack	Cat. Nos.	Fittings (continued)
		<p>Crossovers</p> <p>Supplied with lid, lid fixings and crossover to trunking fastenings All 2 and 3 compartment crossovers include a bridge flyover complete with fixing brackets and screws Bridge flyovers reduce the cable by capacity 50% except on offset products which give full cable capacity</p> <p>1 compartment 2 compartment 3 compartment</p> 
1 1 1	MG Z AGX MG Z AGX2C MG Z AGX3C	<p>Offset crossovers</p> <p>Supplied with lids and lid fixings only 1 compartment not available 2 compartment 3 compartment</p> 

Key : Z = trunking size code
Replace Z with the relevant code (see p. 120)

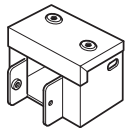
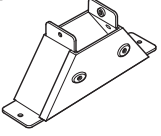
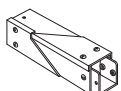
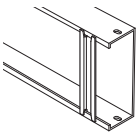
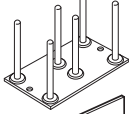
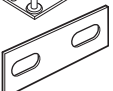
	<p>MG can be replaced by MS or MST for screwfix lids or tamperproof screwfix lids Also available in multi-compartment options</p>
	<p>see p. 120</p>

Salamandre® distribution trunking

standard trunking (continued)



Selection chart (p. 118–119)
Dimensions and technical information (p. 129–130)

Pack	Cat. Nos.	Fittings	Pack	Cat. Nos.	Accessories (continued)
1	MG Z Z R	Reducers Supplied with lids, lid fixings and fastenings. The larger trunking size uses standard connector (not supplied) for joining to reducer (MG Z C see p. 121) 	1	MG Z E	Stop ends Supplied with fastenings
1	MG Z B	Bellmouths Supplied with lids, lid fixings and bellmouth to trunking fastenings 	1	MG Z F	Flanges Supplied with flange to trunking fastenings
1	MG Z B2C	1 compartment	1	MG9 Z H	Stirrup hangers Hole for M10 rod
1	MG Z B3C	2 compartment	1	MG22H	50 mm wide. 50 mm max. depth
1	MG Z B3C	3 compartment	1	MG33H	75 mm wide. 75 mm max. depth
		Change faces Supplied with lids, lid fixings and one trunking connector fitted Not available in multi-compartment Only available in screwfix or tamperproof 	1	MG44H	100 mm wide. 100 mm max. depth
1	MS Z CLH	Left hand	1	MG66H	150 mm wide. 150 mm max. depth
1	MS Z CRH	Right hand	1	MG9 Z H	225 mm wide
		Accessories Cable retainers 50 mm wide 75 mm wide 100 mm wide 150 mm wide 225 mm wide 300 mm wide 	1	MG12 Z H	300 mm wide
		Pin racks 1 compartment Multi-compartment trunking Order per compartment 	1	MG2PART	50 mm deep
		Earth link Fastenings not supplied 	1	MG3PART	75 mm deep
			1	MG4PART	100 mm deep
			1	MG6PART	150 mm deep
			1	MG9PART	225 mm deep
			1	MG12PART	300 mm deep
			1	T206	Loose partitions – 3 m 2 m strip
			1	MS4SG	PVC edging strip For fitting on to top edge of partition
			1	MS6SG	
			1	MS9SG	
			1	MS12SG	
			1	MS4TS	Socket plates
			1	MS6TS	Single
			1	MS9TS	100 mm wide
			1	MS12TS	150 mm wide
			1		225 mm wide
			1		300 mm wide
			1		Twin
			1		100 mm wide
			1		150 mm wide
			1		225 mm wide
			1		300 mm wide

Key : Z = trunking size code

Replace Z with the relevant code (see p. 120)

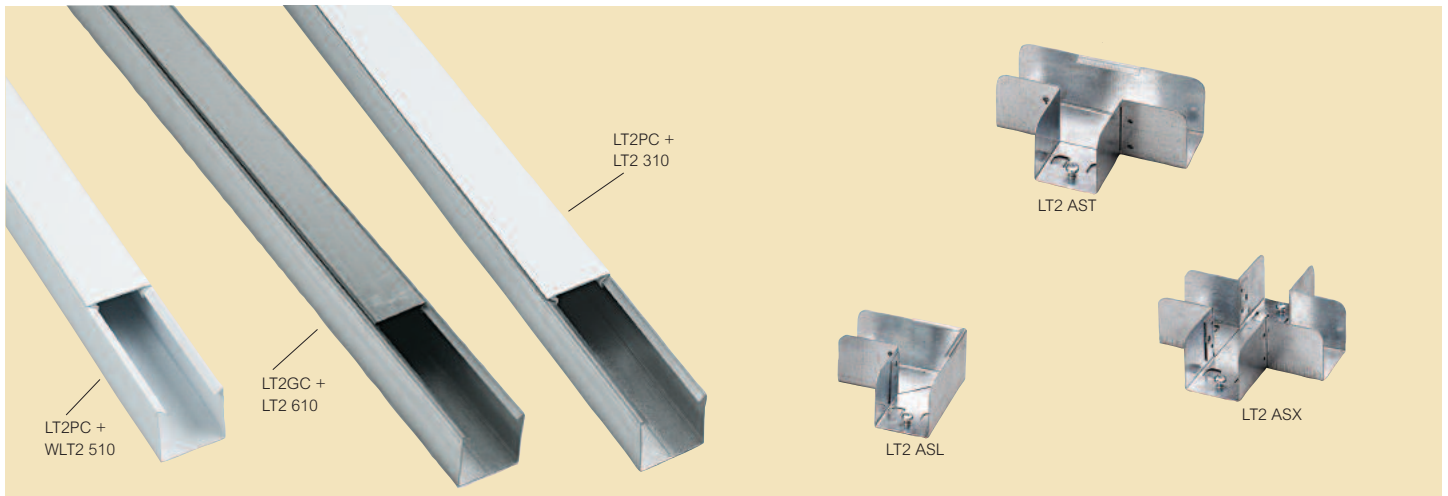
Note:

For reducers, insert the main trunking size code followed by the reduced trunking size code

For stirrup hangers (where shown), insert ONLY THE SECOND NUMBER from the relevant trunking size code

Salamandre® distribution trunking

lighting trunking and fittings



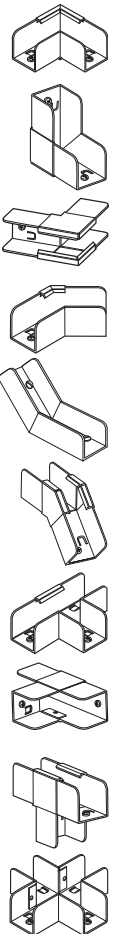
Selection chart (p. 118–119)

A 'clip-in' lid trunking system for fast installation
 Available with a choice of 3 lids in plastic or galvanised finishes
 For white powder coated finish to RAL 9003 product code starts WLT2,
 for pre-galvanised code starts LT2
 All lighting trunking fittings have friction grip to aid quick installation

Pack	Cat. Nos.	Trunking lengths
		Lids and couplers not included
		White
		Nominal steel thickness 1.0 mm
1	WLT2 510	50 mm x 50 mm – 5 m
		Galvanised
		Nominal steel thickness 1.0 mm
1	LT2 310	50 mm x 50 mm – 3 m
1	LT2 410	50 mm x 50 mm – 4 m
1	LT2 510	50 mm x 50 mm – 5 m
1	LT2 610	50 mm x 50 mm – 6 m

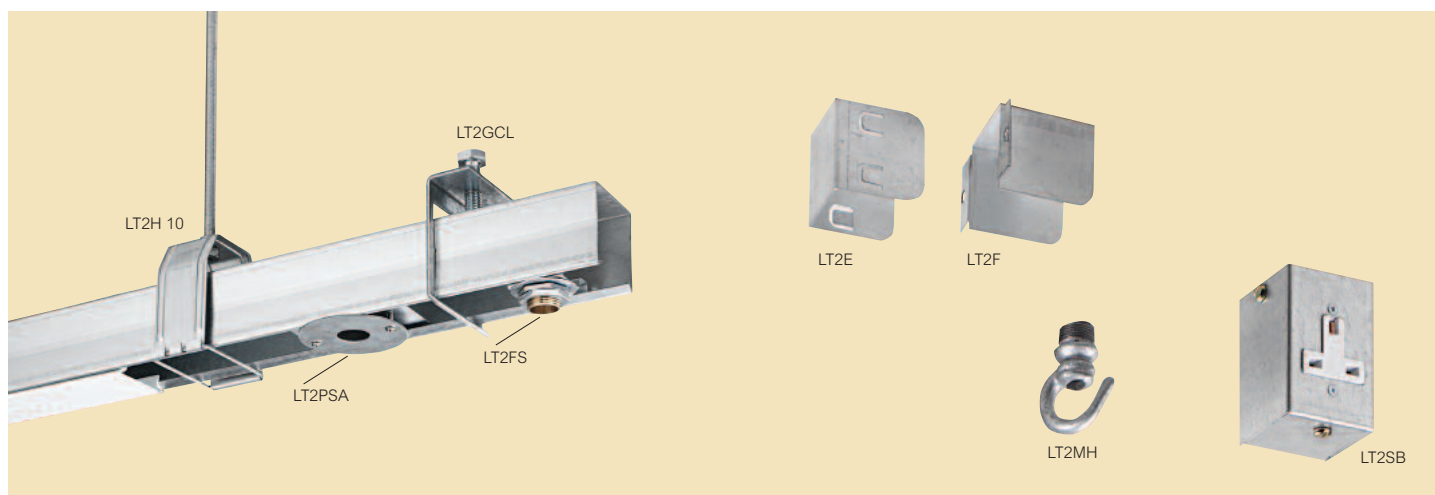
Pack	Cat. Nos.	Fittings
		All fittings have friction grip for quick installation
		Lids – galvanised 2 m length
1	LT2GC	Standard width
1	WLT2GC	Standard width – painted
		Lid – white plastic 2 m length
1	LT2PC	Standard width
		Long coupler
1	LT2C	50 mm x 50 mm

Pack	Cat. Nos.	Fittings (continued)
		Top lid 90° bends
1	LT2ASL	50 mm x 50 mm
1	WLT2ASL	50 mm x 50 mm – white
		Inside lid 90° bends
1	LT2BSL	50 mm x 50 mm
1	WLT2BSL	50 mm x 50 mm – white
		Outside lid 90° bends
1	LT2CSL	50 mm x 50 mm
1	WLT2CSL	50 mm x 50 mm – white
		Top lid 45° bends
1	LT2AL	50 mm x 50 mm
1	WLT2AL	50 mm x 50 mm – white
		Inside lid 45° bends
1	LT2BL	50 mm x 50 mm
1	WLT2BL	50 mm x 50 mm – white
		Outside lid 45° bends
1	LT2CL	50 mm x 50 mm
1	WLT2CL	50 mm x 50 mm – white
		Top lid tees
1	LT2AST	50 mm x 50 mm
1	WLT2AST	50 mm x 50 mm – white
		Inside lid tees
1	LT2BST	50 mm x 50 mm
1	WLT2BST	50 mm x 50 mm – white
		Outside lid tees
1	LT2CST	50 mm x 50 mm
1	WLT2CST	50 mm x 50 mm – white
		Crossovers
1	LT2ASX	50 mm x 50 mm
1	WLT2ASX	50 mm x 50 mm – white



Salamandre® distribution trunking

lighting trunking accessories



Selection chart (p. 118–119)

Pack	Cat. Nos.	Accessories	Pack	Cat. Nos.	Accessories (continued)
1	LT2E WLT2E	End caps 50 mm x 50 mm 50 mm x 50 mm – white	10	LT2CR	Cable retainer
1	LT2F WLT2F	Flanges 50 mm x 50 mm 50 mm x 50 mm – white	10	LT2KL	Klik adaptor
1	LT2GCL WLT2GCL	Girder clamps 50 mm x 50 mm 50 mm x 50 mm – white	1	LT2MH	Male screwed hook
1 1	LT2H 10 LT2H 20	Stirrup hangers 50 mm x 50 mm, 10 mm hole 50 mm x 50 mm, 20 mm hole	1	LT2SB	Socket box Supplied complete with socket 13 Amp standard
1	WLT2H 10 WLT2H 20	50 mm x 50 mm – white, 10 mm hole 50 mm x 50 mm – white, 20 mm hole	10	CO104	Non-standard 13 Amp plug Single pole
10	LT2FS	Suspension unit			
10	LT2PSA	Pull switch adaptor			

Salamandre® distribution trunking

standard trunking technical information

■ Standard cable trunking weights

The weights given are for pre-galvanised finish only, in kilograms (nominal) and subject to material thickness tolerance

	50 x 50	75 x 50	75 x 75	100 x 50	100 x 75	100 x 100	150 x 50	150 x 75	150 x 100	150 x 150	225 x 75	225 x 100	225 x 150	225 x 225	300 x 100	300 x 150	300 x 300
Trunking lengths per metre including lid and connectors	1.9	2.8	3.2	3.2	3.7	4.2	4.2	4.7	5.1	7.6	6.1	7.9	9.2	11.0	9.6	10.8	14.4
Bends	0.3	0.4	0.5	0.5	0.6	0.7	0.9	0.9	1.1	1.3	1.7	2.0	2.4	3.0	3.0	3.5	3.9
Tees	0.3	0.4	0.5	0.6	0.7	0.7	0.9	1.0	1.1	1.3	1.7	1.9	2.2	2.7	2.9	3.2	3.6
Crossovers	0.4	0.5	0.6	0.6	0.7	0.8	1.0	1.0	1.1	1.3	1.7	1.8	1.9	2.4	2.6	2.8	3.3
Reducers	–	0.5	0.5	0.5	0.7	0.8	0.8	0.9	1.0	1.1	1.4	1.5	1.6	1.9	1.8	1.9	2.8
Bellmouths	0.5	0.8	0.8	1.2	1.3	1.4	1.6	1.7	1.8	1.9	2.2	2.3	2.4	2.9	2.8	2.9	3.9
Change faces	0.6	0.8	1.0	1.0	1.1	1.3	1.3	1.4	1.5	2.3	1.8	2.4	2.8	3.3	2.9	3.2	4.3
Loose separators per metre	0.4	0.4	0.5	0.4	0.5	0.7	0.4	0.5	0.7	1.0	0.5	0.7	1.0	1.5	0.7	1.0	2.0

■ Multi-compartment weights

Trunking lengths

To calculate the weight of multi-compartment trunking add the weight of the relevant number of loose separators to that of the trunking

Fittings

Multiply the weight of the fitting by the appropriate factor

	2 compartment factor	3 compartment factor
Bend	1.25	1.50
Tee	1.50	2.00
Crossover	1.50	2.00
Bellmouth	1.25	1.50

■ Cable trunking capacity guide

For each size of cable, multiply the number to be installed by the common factor. Add together the results of these calculations for all cable sizes. The correct trunking size must have a capacity factor equal to or greater than this total

Example :

24 x 16.0 mm² stranded 24 x 47.8 = 1147.2
 20 x 2.5 mm² solid 20 x 11.9 = 238.0

1385.2

Minimum trunking size required in this example = 75 x 50 (trunking capacity factor 1555)

Cable sizes and factors

Size (mm ²) (nom.)	Common cable factor
Solid	
1.5	8.0
2.5	11.9
Stranded	
1.5	8.6
2.5	12.6
4.0	16.6
6.0	21.2
10.0	35.3
16.0	47.8
25.0	73.9
35.0	93.3
50.0	128.7
70.0	167.4
95.0	229.7
120.0	277.6
150.0	343.1
240.0	552.0

Trunking sizes and capacity factors

Size (mm)	Trunking capacity factor
50 x 50	1037
75 x 50	1555
75 x 75	2371
100 x 50	2091
100 x 75	3189
100 x 100	4252
150 x 50	3091
150 x 75	4742
150 x 100	6394
150 x 150	9697
225 x 75	7114
225 x 100	9298
225 x 150	14652
225 x 225	21766
300 x 100	12788
300 x 150	19447
300 x 300	38000

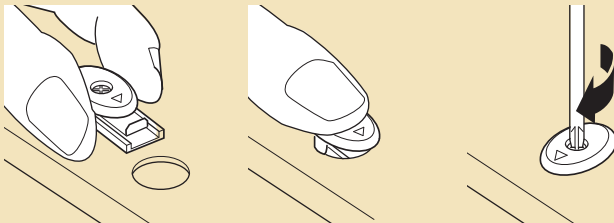
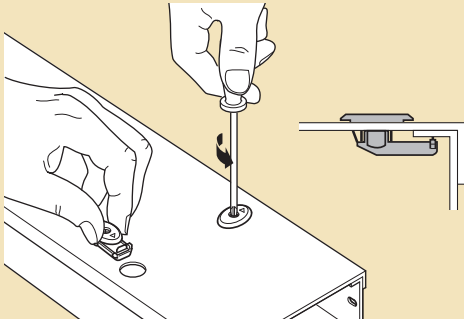
Salamandre® distribution trunking

standard trunking technical information (continued)

■ Lid fixing details

Diecast turnbuckle

A steel fixing encased within a smooth diecast turnbuckle with excellent earth bonding properties
Quick, safe, easy to install and time saving
Manufactured from zinc alloy ZL3 and diecast



Drill a 14.1 mm hole in lid to accept turnbuckle

Press turnbuckle into lid and installation is complete

Simply turn 90° clockwise to lock (or anticlockwise to release), using a No.2 cross head screwdriver

Screw fixing

Screws are M5 x 6 mm posidrive, pan head with earth nib on underside of head and a rounded end to prevent cable damage
Manufactured to BS 4183 and BS 3643 from low carbon mild steel, zinc plated and clear passivated

Tamperproof screw fixing

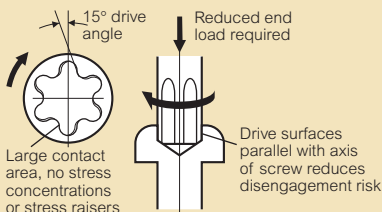
An M5 x 12 mm pan head screw with the efficient high torque TORX®(1) recess

Tamperproof screw fix lids are supplied fitted with mild steel plated screws with TORX®(1) screws bagged separately for fitting when installation is complete

- Torque transmitted positively and accurately
- Large contact area - reduces wear
- Parallel sides - holds screwdriver captive and virtually eliminates slippage

Manufactured to BS 4183 and BS 3643 from low carbon mild steel, zinc plated and clear passivated

A special TORX®(1) screwdriver is needed (see p. 121)



Large contact area, no stress concentrations or stress raisers

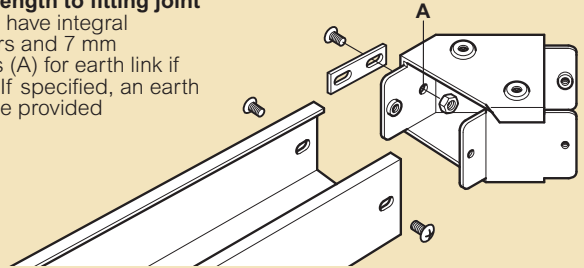
Drive surfaces parallel with axis of screw reduces disengagement risk

(1) TORX is a registered trademark of Camcat/Textron Inc.

■ Coupling details

Straight length to fitting joint

All fittings have integral connectors and 7 mm knockouts (A) for earth link if required. If specified, an earth link can be provided



Cut lengths

Drill clearance holes in cut length for M5 pan head screws in positions shown below

Up to 300 mm wide

25	12.5	50 deep
50	12.5	75 deep
A	12.5	100 and 150 deep

225 and 300 mm wide

12.5	225 and 300 deep
B	
B	
40	

All dimensions in mm (nominal)

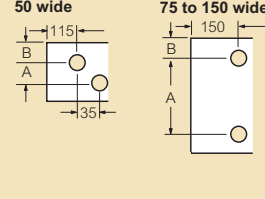
Trunking depth	A	Trunking depth	B
100	51	225	72
150	101	300	110

■ Hole positions for lids cut to length

DIECAST TURNBUCKLE

50 wide 75 to 150 wide

Ø 14.1 mm holes

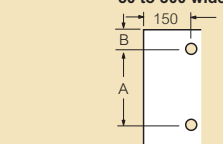


Trunking width	A	B
50	18	17.50
75	43	18.00
100	68	18.00
150	118	17.75
225	193	18.25
300	268	18.75

SCREW FIXED

Ø 7.2 mm holes

50 to 300 wide



All dimensions in mm (nominal)

Trunking width	A	B
50	40	6.50
75	65	7.25
100	90	7.25
150	140	7.50
225	215	5.00
300	290	5.00

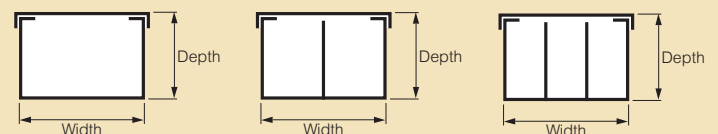
■ Standard trunking lengths

Each trunking length is supplied with connector, lid and lid fixings

Screwfix lids are supplied fitted with pozi pan head BZP screws as standard

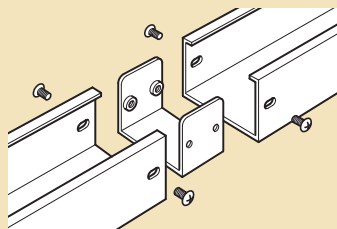
Tamperproof screw fix lids are supplied fitted with mild steel plated screws with TORX®(1) screws bagged separately for fitting when installation is complete


For trunking sizes and size codes (see p. 120)




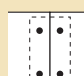
Trunking and fittings are supplied with equal compartments as standard. For unequal compartments, details must be supplied at time of order for this non-standard product


Trunking connector



 50 mm deep
4 screws per connector

 75 mm deep (up to 150 mm wide)
4 screws per connector

 75 (225 mm and 300 mm wide)
100 mm and 150 mm deep
8 screws per connector

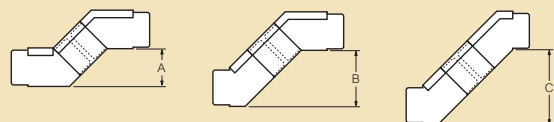
 225 mm and 300 mm deep
12 screws per connector

Fitting to fitting adaptor

Various offsets can be achieved using two standard 45° bends

Simply connect an inside lid bend to an outside lid bend using a fitting to fitting adaptor (see p. 121), in one of the three configurations

Available on up to 150 x 150 mm trunking only

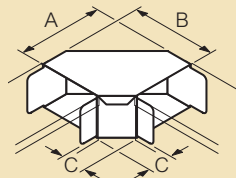


Trunking depth	A	B	C
50	50	75	100
75	60	90	110
100	70	95	115
150	85	105	130

All dimensions in mm (nominal)

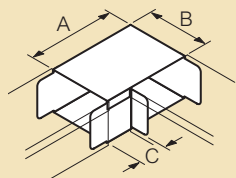
90° bends

Top lid 90° bend – gusset



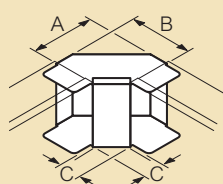
Width	A	B	C
50	75	75	25
75	100	100	25
100	125	125	25
150	175	175	25
225	251	251	25
300	326	326	25

Top lid 90° bend – square



Width	A	B	C
50	85	50	35
75	110	75	35
100	135	100	35
150	185	150	35
225	260	225	35
300	335	300	35

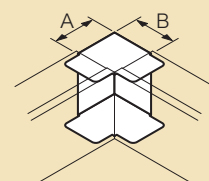
Inside lid 90° bend – gusset



Up to 150 wide	A	B	C
Depth 50	86	86	35
75	110	110	35
100	136	136	35
150	186	186	35

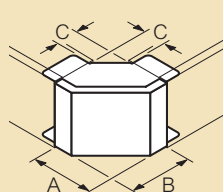
225 and 300 wide	A	B	C
Depth 50	86	86	35
75	110	110	35
100	136	136	35
150	186	186	35
225	305	305	35
300	336	336	35

Inside lid 90° bend – square



Depth	A	B
50	50	50
75	75	75
100	100	100
150	150	150
225	225	225
300	300	300

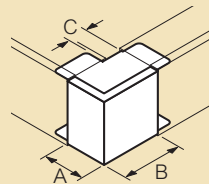
Outside lid 90° bend – gusset



Up to 150 wide	A	B	C
Depth 50	75	75	25
75	100	100	25
100	125	125	25
150	175	175	25

225 and 300 wide	A	B	C
Depth 50	75	75	25
75	100	100	25
100	125	125	25
150	175	175	25
225	250	250	25
300	325	325	25

Outside lid 90° bend – square



Up to 150 wide	A	B	C
Depth 50	50	75	25
75	75	100	25
100	100	125	25
150	150	175	25

225 and 300 wide	A	B	C
Depth 50	75	74	25
75	100	99	25
100	125	124	25
150	175	174	25
225	250	249	25
300	325	324	25

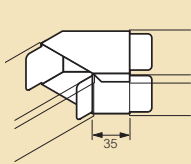
Width and depth refer to trunking sizes
Dimensions are identical for single and multi-compartment
All dimensions in mm (nominal)

Salamandre® distribution trunking

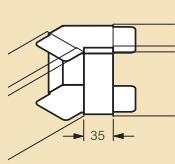
standard trunking technical information (continued)

45° bends

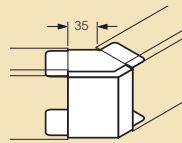
Top lid 45° bend



Inside lid 45° bend



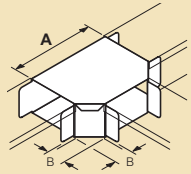
Outside lid 45° bend



Dimensions are identical for single and multi-compartment
All dimensions in mm (nominal)

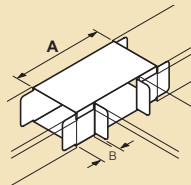
Tees

Top lid tee – gusset



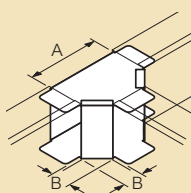
Width	A	B
50	100	25
75	125	25
100	150	25
150	200	25
225	275	25
300	350	25

Inside lid tee – square



Width	A	B
50	120	35
75	145	35
100	170	35
150	220	35
225	295	35
300	370	35

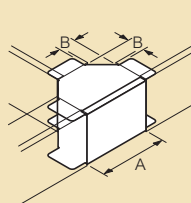
Inside lid tee – gusset



Up to 150 wide Depth	A	B
	50	120
75	145	35
100	170	35
150	220	35

225 and 300 wide Depth	A	B
	50	162
75	187	45
100	212	45
150	262	45
225	337	45
300	412	45

Outside lid tee – gusset



Up to 150 wide Depth	A	B
	50	100
75	125	25
100	150	25
150	200	25

225 and 300 wide Depth	A	B
	50	100
75	125	25
100	150	25
150	200	25
225	275	25
300	350	25

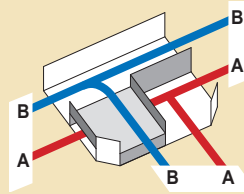
All dimensions in mm (nominal)

Compartment tees

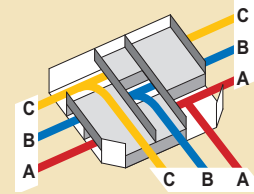
Approximately 50% of cable capacity is lost when using multi-compartment tees

Examples :

2 compartment

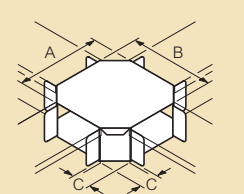


3 compartment



Crossovers

Crossover



Width	A	B	C
50	100	100	25
75	125	125	25
100	150	150	25
150	200	200	25
225	275	275	25
300	350	350	25

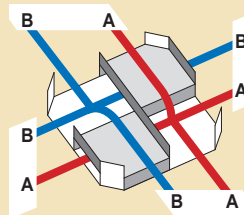
Dimensions are identical for single and multi-compartment
All dimensions in mm (nominal)

Multi-compartment crossovers

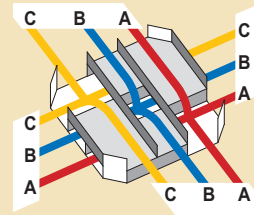
Approximately 50% of cable capacity is lost when using multi-compartment crossovers

Examples :

2 compartment crossover

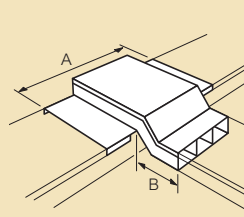


3 compartment crossover



Offset tees and crossovers

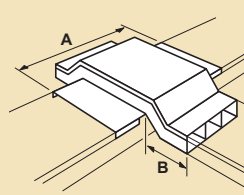
Offset tee



Width and branch of tee	A	Depth of through trunking	B
	50		150
75	175	75	160
100	200	100	196
150	250	150	266
225	325	225	373
300	400	300	478

Note : There is no loss of cable capacity when using offset tees and crossovers

Offset crossover



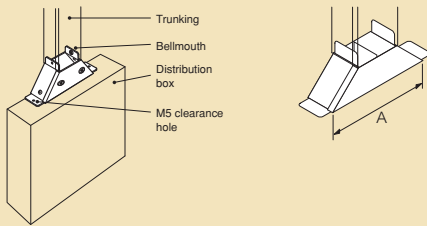
Width of crossover A	B	Depth of through trunking	B
			50
75	175	75	160
100	200	100	196
150	250	150	266
225	325	225	373
300	400	300	478

Width and Depth refer to trunking sizes
Dimensions are identical for single and multi-compartment
All dimensions in mm (nominal)

Each offset tee is supplied complete with fixing bracket and M5 pozi pan head screw and nut

Offset tees can be inverted to allow cables to branch off on opposite sides of trunking

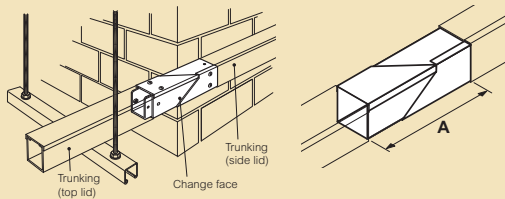
■ Bellmouths



Width	A
50	147
75	172
100	197
150	247
225	322
300	397

Width refers to trunking sizes
Dimensions are identical for single and multi-compartment
All dimensions in mm (nominal)

■ Change faces



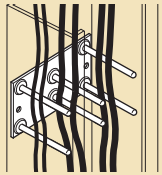
Width	A
50	200
75	225
100	250
150	300
225	375
300	450

Note: no change face multi-compartment trunking available

Width refers to trunking sizes
All dimensions in mm (nominal)

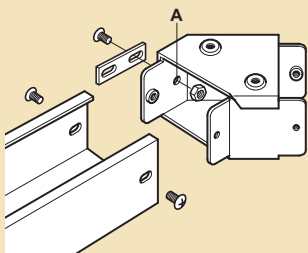
■ Pin racks

Available for trunking up to 150 mm wide
Supplied in packs of 10



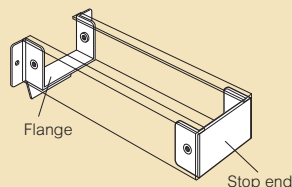
Pin rack

■ Earth link



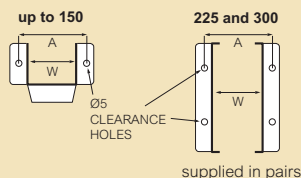
All fittings have 7 mm knockouts (A) for fixing an earth link
An M5 screw and nut are needed for fixing the earth link

■ Stop ends and flanges



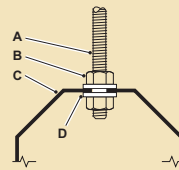
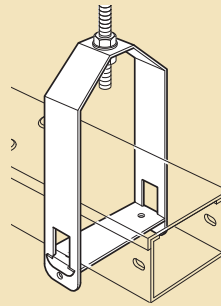
Hole position for flanges

Trunking width	A
Up to 150	W + 22.5
225 and 300	W + 26.0



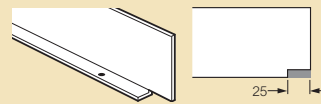
All dimensions in mm (nominal)

■ Stirrup hangers



- A M10 threaded rod
- B M10 nut
- C Hanger
- D Form A flat washers

■ Loose separators

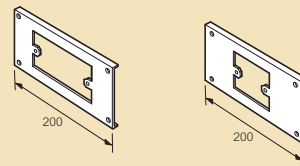


All dimensions in mm (nominal)

Fastenings not supplied
Pop rivet or spot weld on site to suit

■ Socket plates

Socket plate fixing for screwfix and tamperproof trunking is fixed by retaining clips and screws (see p. 121)



All dimensions in mm (nominal)

Socket plate fixing for turnbuckle trunking is screwed to retaining bar

